



MIDLETON PARK
HOTEL

Meet in MIDLETON

Midleton Park Hotel
Old Cork Road, Midleton, Co. Cork
P25 AX67
e: events@midletonpark.com
t: 021 463 5100

THE
TALBOT.....
COLLECTION

MEET IN MIDLETON

Midleton Park Hotel is ideally located just 5 minutes walk from the charming town of Midleton, and 20 minutes from Cork City, accessible by regular train and bus services.

Our function spaces can cater for meetings and events of all sizes, whether you're looking to hold a one-to-one interview off-site or a conference for up to 250 people.

Our experienced team will ensure your booking is handled with the precise care and organisation needed, from the initial enquiry to final sign off.

We also have 79 spacious and recently renovated bedrooms meaning multi-day meetings and events can take place with delegates staying on-site.

If you have any questions or require assistance, just email events@midletonpark.com and one of our team will be in touch.



Enquire today:
e: events@midletonpark.com
t: 021 463 5100

MEETING ROOMS

Jameson Suite:

The Jameson Suite is our largest function room and is popular for conferences and events with numbers of 100 or more. We can cater for up to 250 people in this room, dependent on the layout, and it measures 20.5m x 16.5m.

Previous clients who have used our Jameson Suite have commented on the space, saying *'it was lovely and spacious meaning our employees could socially distance, if necessary'* and also on the flexibility of the room, saying *'we were able to host a training session for staff in the afternoon and return for a sit down dinner later in the evening, it was ideal.'*

The Jameson Suite has a private bar that can be accessed during your function and is equipped with an in-room AV system including microphone, projector and screen.



Enquire today:
e: events@midletonpark.com
t: 021 463 5100

MEETING ROOMS

Garden Suite:

The Garden Suite is 12m x 10.5m in size and has ample natural lighting due to it's location, next to our private gardens. This room is very popular for company parties, get-togethers and meetings for up to 80 people. We have had some great feedback from previous event organisers in the Garden Suite including *'it was so nice to have access to the gardens for our party, the sun was shining so everyone enjoyed drinks on the lawn before eating inside.'*

The Garden Suite has a private bar and AV capabilities and sole access to our private gardens for the duration of your booking.



Enquire today:
e: events@midletonpark.com
t: 021 463 5100

MEETING ROOMS

Boardroom:

The Boardroom is located next to our reception and is an ideal room for small meetings or interviews. Ideally suited as a breakout room for larger meetings in one of our other suites, The Boardroom can cater for up to 24 people, depending on the style of setup, and it measures 9m x 5m. Our previous clients have spoken positively about it, saying *'The Boardroom was perfect for our requirements, we needed a small meeting room for interviews and we had tea, coffee and lunch pre-ordered to the room. Everything about the service on the day was brilliant.'*



Enquire today:
e: events@midletonpark.com
t: 021 463 5100

MEETING ROOMS

Specifications

JAMESON SUITE

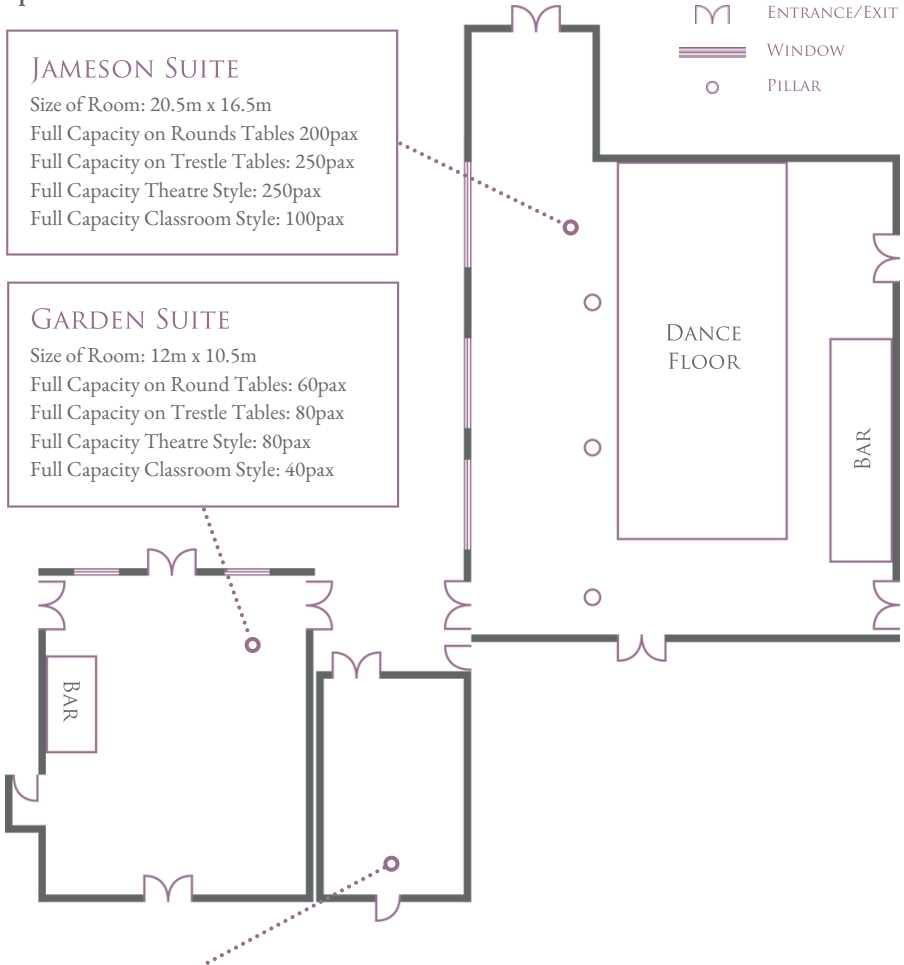
Size of Room: 20.5m x 16.5m
Full Capacity on Rounds Tables: 200pax
Full Capacity on Trestle Tables: 250pax
Full Capacity Theatre Style: 250pax
Full Capacity Classroom Style: 100pax

GARDEN SUITE

Size of Room: 12m x 10.5m
Full Capacity on Round Tables: 60pax
Full Capacity on Trestle Tables: 80pax
Full Capacity Theatre Style: 80pax
Full Capacity Classroom Style: 40pax

BOARDROOM

Size of Room: 9m x 5m
Full Capacity on Boardroom Table: 16pax
Full Capacity Theatre Style: 24pax
Full Capacity Classroom Style: 12pax



REFRESHMENTS

Our scrumptious selection of refreshments include breakfast and mid-morning choices of teas, coffees and pastries to afternoon or evening options of finger food and bespoke private dining menus.

Our menus have been specially designed by our Head Chef Michael Cashman with flexibility in mind and packed with ingredients sourced from local producers. Each of our menus can be catered to your specific needs and your breaks can be served in your meeting room or in a public area.



Enquire today:
e: events@midletonpark.com
t: 021 463 5100